

# Data Migration Services





## Data Migration Practice

### Challenges faced by financial institutions:

- Lack of experience in data migration tools
- Excessive time wastage with manual data movement instead of learning new systems
- Cost associated with data migration activities and tools with no long-term ROI
- Knowledge of functional data target model
- Product consolidation and complex mapping requirement
- Reconciliation and compliance requirements are complex and extensive

### Benefits of engaging our data migration experts:

- Reduced cost and timeline
- Specialized data migration accelerators (ETLR tools)
- Subscription basis for tools and staff — when you stop using, you stop paying
- Data reconciliation assist
- Audit and compliance reporting
- Archiving tools for transactional data
- Risk free well-defined strategy for each phase of migration

**Dedicated data migration centre of competency to assist you in all types of data migration requirements.**



**Worldwide** experience



**Multiple successful** complex migrations

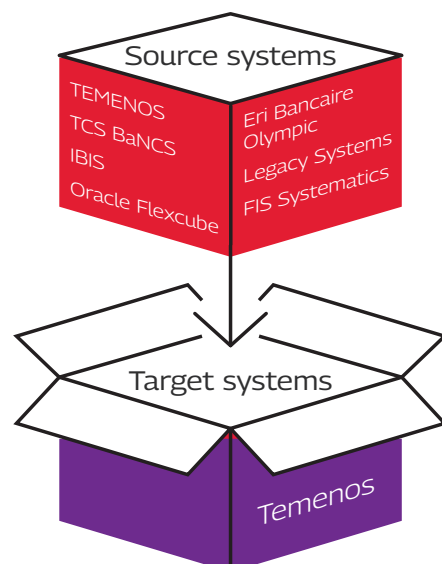


Migration via **tools, accelerators, and automation**



**Core banking** supporting multiple applications and systems

**We have expertise in data migration from any source system to any target system**



## Our Unique differentiators



### Data Migration Expertise



- Temenos **Certified Managed Migration Partner**
- Experience in executing **70+** Temenos data migration projects
- Well defined approach for data migration from Temenos/legacy system to Temenos
- Expertise in direct feeds through load/script

### Data Migration Accelerators



- WILF - Migration and reconciliation tool
- SEM
- Expertise in Temenos DMT
- Expertise in Informatica tool
- Subscription basis for tool and staff

### Experienced Talent Pool



- Global Temenos partner with end to end capability
- Experienced data migration team to reduce risk
- Supported by ETL experts
- Onshore/offshore model to suit bank requirement and cost profile

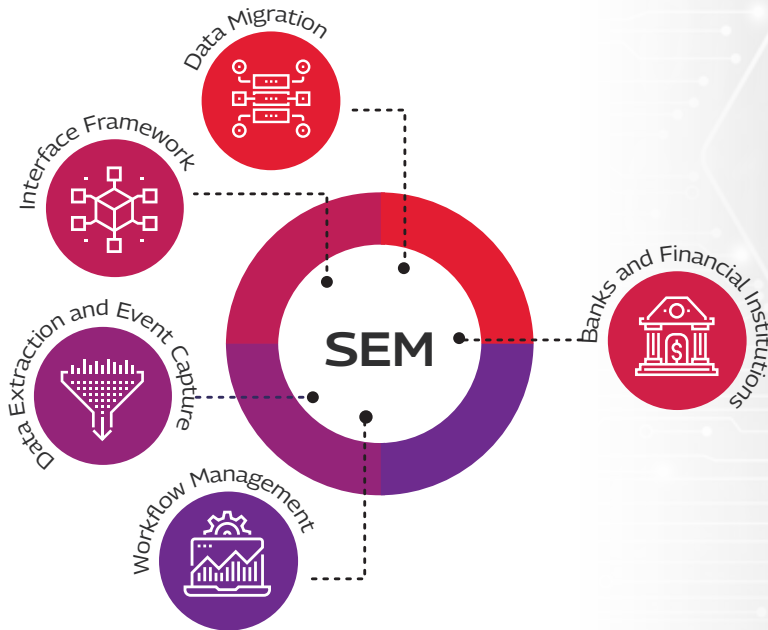
### Temenos Centre of Excellence



- **23+** years Temenos implementation experience
- **750+** Temenos consultants
- **1250+** Temenos certifications
- Global presence and delivery capabilities

# Data Migration Tools

## 1 SEM — Enhanced Migration Tool



A **Temenos Transact compliant**, parameter based data migration, universal interface and workflow management solution tool that allows users to create “intelligent” interfaces, and automated Transact based workflows based upon external and internal triggers.

## 2 WILF — Migration and Reconciliation Tool

What I'm Looking For (WILF) is a multi-threaded migration tool that allows data to be transferred between banking or financial systems. Working with any source and target system, this unique software handles the end to end process providing risk-free migration management for any size project.

### Benefits provided:

- Extracted data can be cleansed and enhanced
- Reduced business and operational risk
- Submissions are through vendor supported interfaces rather than direct database access
- Reconcile data from the source and target application using widget and reports to identify issue
- Complete audit providing business transparency
- A complete extraction, transformation, load and reconciliation process to reduce business costs
- Deliver projects in shorter timeframes and reduce risk by automating many manual processes
- Migrate data from multiple sources to the target application using collections of data
- Preview transformed data to quickly view changes and see how this affects individual or sets of records



# Factory Model

- **Reusable framework** for end to end data migration
- Covers **different phases and activities** of data migration
- Applicable for migration from **any source system to target system**
- Up to **60%** reusability
- Dedicated data migration practice and **experts**

## Successful Migrations

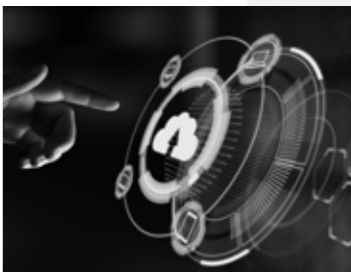
### Leading Private Bank in Singapore

Migration from legacy system to T24 R13 and then later from R13 to R18 version, covering core, wealth, and retail applications in a multinational company environment.



### Global Private Bank in UK

Bank underwent transformation to create a common platform across different entities while retaining functionality for local requirements. Tech Mahindra carried out the end to end migration using the WILF migration utility.



### Large Bank in Israel

Migration from legacy system to T24 for its Zurich private banking instance. Data transformation and loading to multiple companies were performed using the in house SEM tool.



# TECH mahindra



[www.youtube.com/user/techmahindra09](https://www.youtube.com/user/techmahindra09)  
[www.facebook.com/techmahindra](https://www.facebook.com/techmahindra)  
[www.twitter.com/tech\\_mahindra](https://www.twitter.com/tech_mahindra)  
[www.linkedin.com/company/tech-mahindra](https://www.linkedin.com/company/tech-mahindra)  
[www.techmahindra.com](https://www.techmahindra.com)  
[bp.presales@techmahindra.com](mailto:bp.presales@techmahindra.com)

Copyright © Tech Mahindra 2023. All Rights Reserved.

Disclaimer: Brand names, logos and trademarks used herein remain the property of their respective owners.