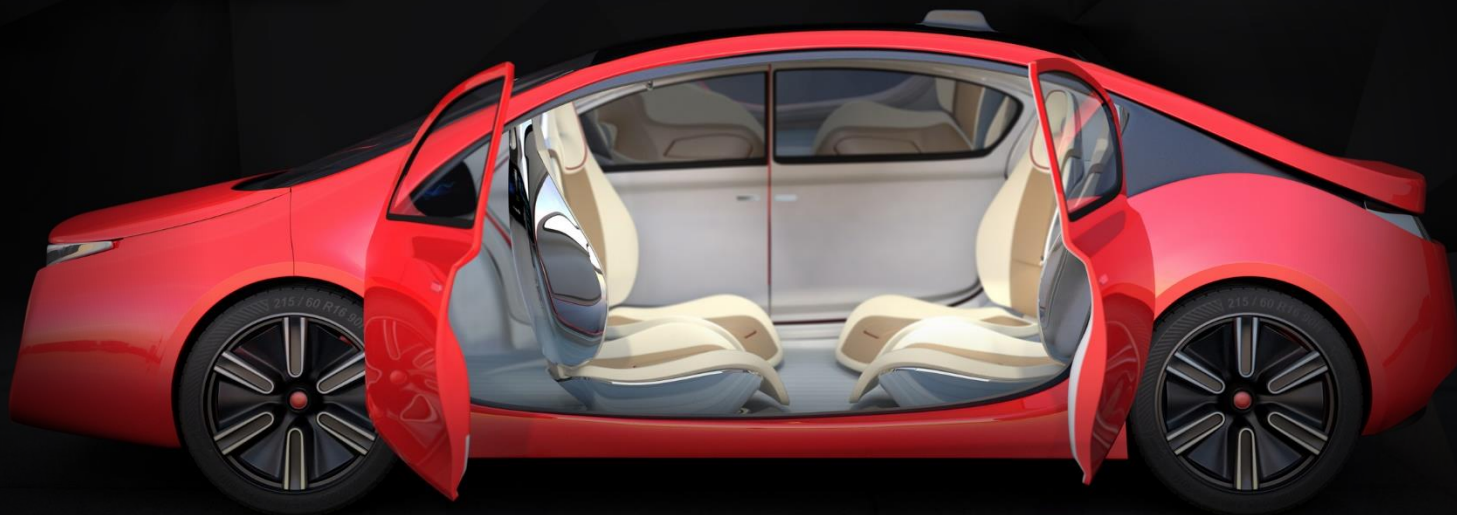


AUTOMOTIVE INTERIORS EXPERIENCE





- Started in year **2,000** ■ **50 +** active customers
- **4,300+** engineers ■ **10+** Global engineering centers ■ **50%** Passenger OEMs
- **15%** Commercial OEMs ■ **35%** Auto Suppliers
- **\$200+** Mn investments in future technologies and expanding global footprint

Investments on Future Technologies



Autonomous
driving and
connectivity
technologies



Personalized
mobility and
connected car
platforms



EV/ HEV
technology



Future
Interiors and
seating



Vehicle weight
reduction
technologies

Platform based solutions for **Connected Car and Personalized Mobility & Connected Factories**



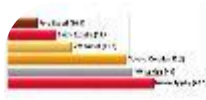
Key Differentiators

- Ownership of Derivative Programs with Global Execution Models bringing in Cost Arbitrage to the tune of 25%
- Simulation Driven Product Development, 15-20% reduction in Product Development Time
- 20+ years of experience in Safety Critical Automotive Electronics
- AI Enabled Cost Optimization & Supply Chain Management Platforms, 10-12% Product Cost Savings for 100+ programs
- Industry 4.0 Solutions, IoT Based Asset Tracking, AR/VR Solutions
- Engineering Automation, Up to 50% Cost & Time Savings Achieved for 300+ Projects
- Innovative and Flexible Business Models. Willing to Co-invest/Risk Share on New Technology Programs



Automotive Interiors: Key Offerings

TechM, a Full vehicle development partner for Interiors for new vehicle development & derivative programs



Benchmark (Index value) (x1000 units)



Toyota Corolla



Toyota Corolla



Toyota Corolla



Toyota Corolla

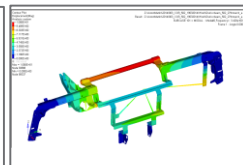
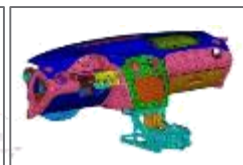
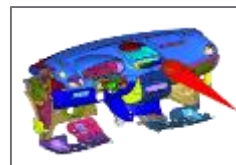
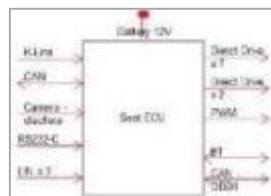
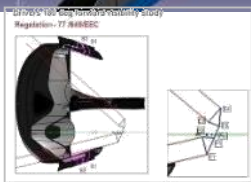
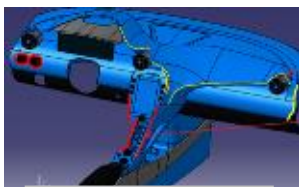


Toyota Corolla



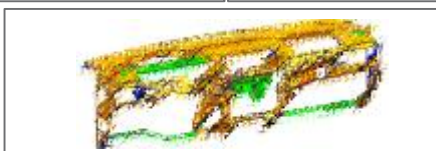
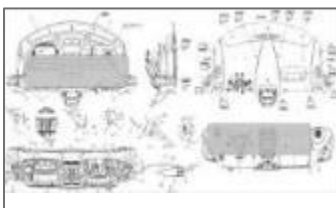
Market Analysis, Benchmarking

Styling, Master Sections, Gap & Flushness checks



Concept Layout, component design, Kinematics study, E/E systems design & integration

Virtual Validations – Durability, Modal, Crash & Safety simulations



Detail Design, DMU checks, Dimensional Management, Design Updates

Prototype development & Physical validation support



Our Value Proposition



A team of 500+ Interiors & Seating systems engineers working for Automotive OEMs & Tier-1s across the globe



Established global ecosystem to support full gamut of Interiors systems from styling till SOP. Executed 30+ Interiors subsystems design & development programs



New Age Interiors styling for EV & Autonomous car applications



Facelift program for European OEM



Decade of Interior engineering for Luxury car manufacturer



Decade of Body Systems engineering for Commercial OEM



Three Body Engineering programs for Iconic car manufacturer

Simulation driven interior product design: Expertise of niche CAE analysis like crashworthiness checks, Mold flow analysis for the injection molded parts & recommendation for manufacturing cost optimization, thermo-structural simulations for plastics

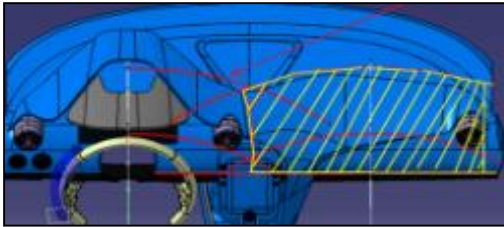


Product Strategy establishment for New & emerging markets – Complete ownership from strategy outline till implementation



Automotive Interiors: Key Success Stories

Instrument Panel



Design, Development from concept till SOP for 3 passenger car variants

Center Console



Center Console redesign for SUV – Weight reduction by 14% and cost reduction by 8% from the baseline

Cross Car Beam



Modular Cross Car Beam design for new HVAC & IP integration

Overhead Console



Next generation Compact OHC design – reduced height by 65%

HVAC Ducts



Design of HVAC ducts: Defrost, Face & Foot, Intake & Delivery ducts design. Improved Uniformity flow: 85%

Instrument Cluster



Design of Cluster attachment with Instrument panel substrate meeting DFMA requirements



INTEGRATED ENGINEERING SOLUTIONS (IES)

Is a Connected Engineering Solutions business unit of Tech Mahindra. At Integrated Engineering Solutions, customers are at the core of every innovation. We align Technology, Businesses and Customers through innovative frameworks. We deliver future-ready digital convergence solutions across Aerospace and Defense, Automotive, Industrial Equipment, Transportation, Consumer Products, Energy and Utilities, Healthcare and Hi-Tech products. Our 'Connected' solutions are designed to be platform agnostic, scalable, flexible, modular and leverage emerging technologies like Networking, Mobility, Analytics, Cloud, Security, Social and Sensors, that enable launching of smart products and deliver unique connected consumer experiences, weaving a connected world. Coupled with this, our strong capabilities in Electronics, Mechatronics and Mechanical Engineering along with domain understanding and product knowledge, bring excellence to the entire lifecycle of these connected ecosystems.

**Tech
Mahindra**

CONTACT US AT :

IES_Marketing@TechMahindra.com

www.techmahindra.com